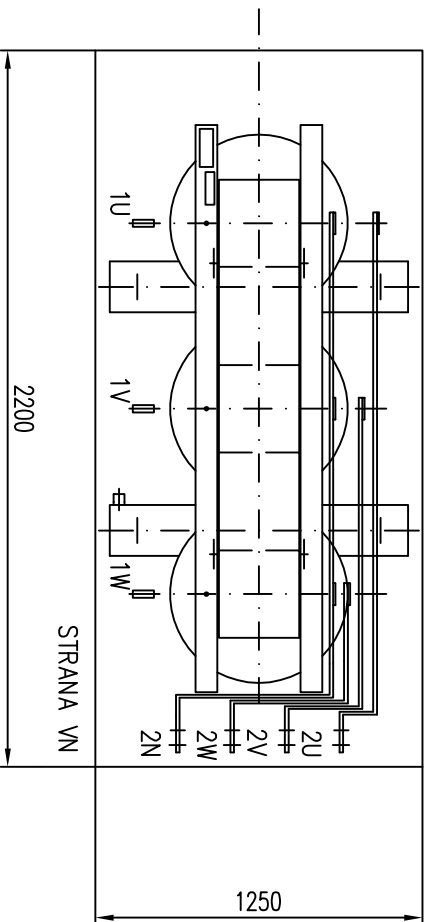
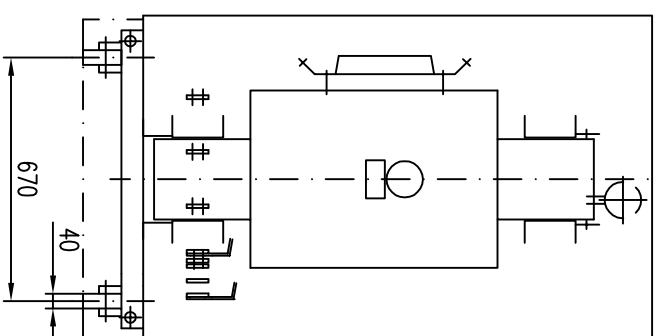
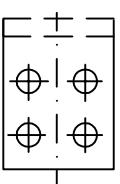
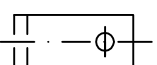


STRANA VN



1 VN PŘIPOJ. PRÁPORCE

2 NN PŘIPOJ. PRÁPORCE



TYP	DTTH 800/10	P ₀ [W]	1750
VÝKON [kVA]	800	P _k [W]	7600
VN [kV]	10	U _k [%]	6
NN [V]	400	KRYTÍ	IP23
SKUP. ZAPOJENÍ	Dyn1	HMOTNOST [kg]	ca 2450