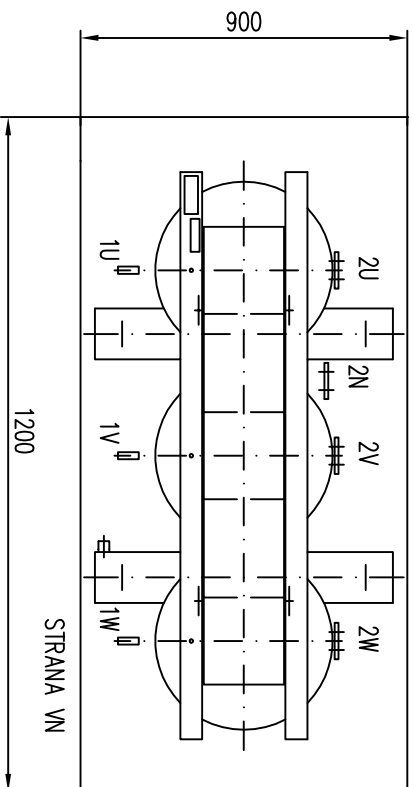
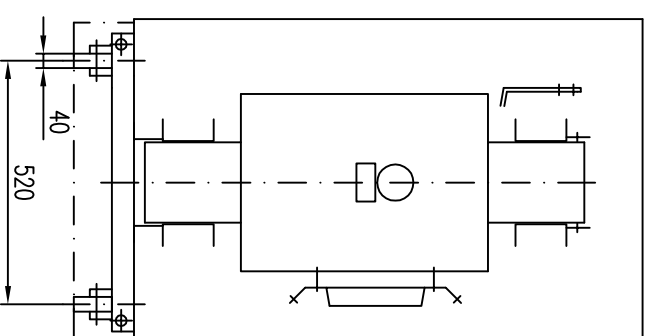
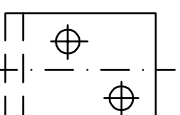
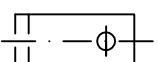


STRANA VN



1 VN PŘÍPOJ. PRÁPORCE

2 NN PŘÍPOJ. PRÁPORCE



Typ	DTHL 50/10	P _o [W]	240
Výkon [kVA]	50	P _k [W]	1350
VN [kV]	10	U _k [%]	4
NN [V]	400	KRYTÍ	IP 23
SKUP. ZAPOJENÍ	Dyn11	HMOTNOST [kg]	ca 680