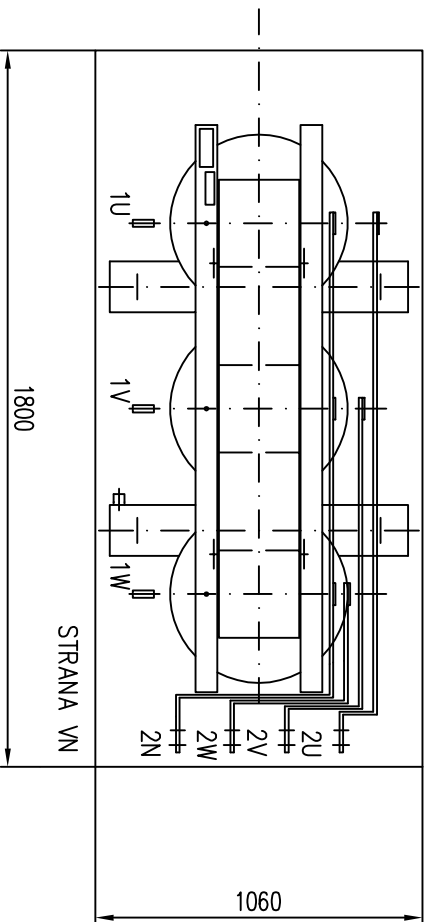
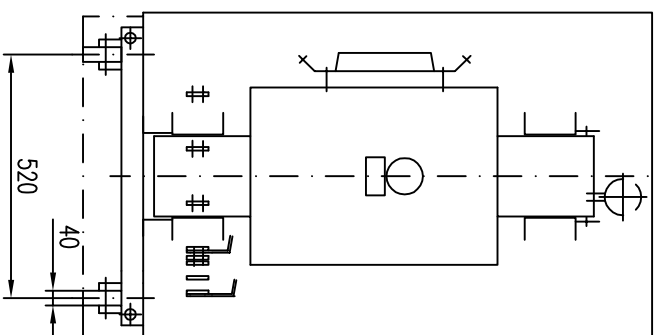
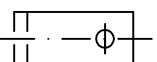


STRANA VN



TYP	DTTHL 250/20	Po [W]	650
VÝKON [kVA]	250	Pk [W]	3350
VN [kV]	22	Uk [%]	6
NN [V]	400	KRYTÍ	IP23
SKUP. ZAPOJENÍ	Dyn1	HMOTNOST [kg]	1500

1 VN PŘÍPOJ. PRÁPORCE



2 NN PŘÍPOJ. PRÁPORCE

